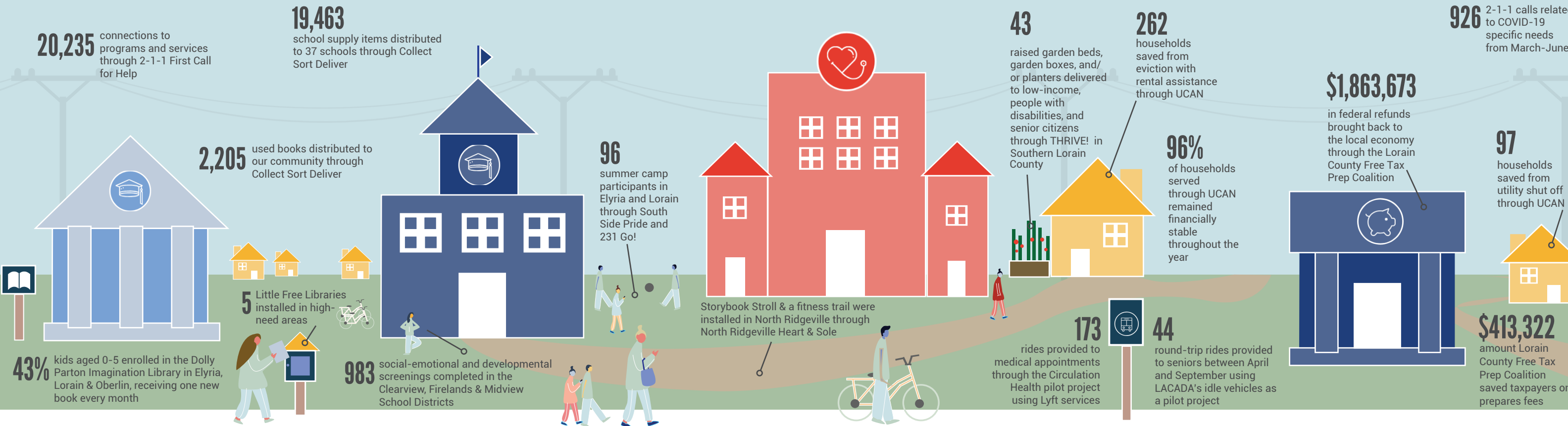


A FEW PLACES YOU'LL FIND UNITED WAY AT WORK

To learn more about our Community Collaboratives & Impact Initiatives, visit uwloraincounty.org

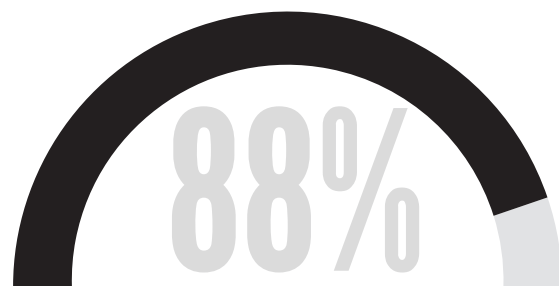


UNITED, WE FIGHT AGAINST THE CHALLENGES FACED BY HARDWORKING FAMILIES IN OUR COMMUNITY

KINDERGARTEN READINESS

Community Collaboratives

- Ready Set Go
Elyria
- Rising Titans
Lorain
- Oberlin Kids
Oberlin

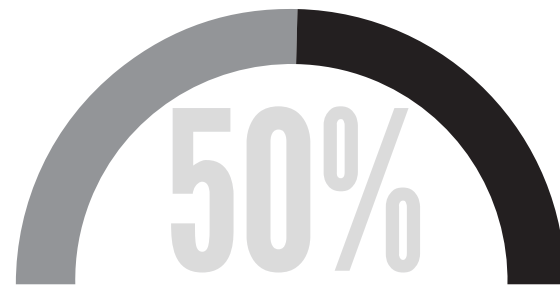


of kids do not meet all of the benchmarks to be prepared for kindergarten in Lorain

MIDDLE SCHOOL SUCCESS

Community Collaboratives

- 231 GO!
South Lorain
- Common VIEW
Clearview, Midview, Firelands School Districts
- South Side Pride
South Elyria

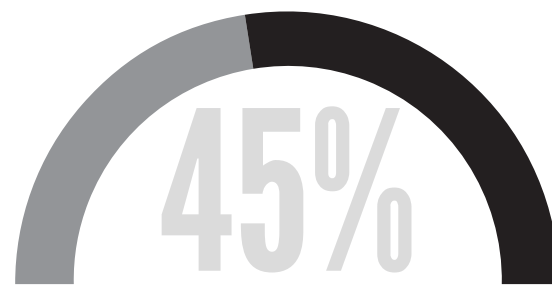


of adults living in South Elyria have high school diplomas

CHRONIC DISEASE PREVENTION

Community Collaboratives & Impact Initiatives

- THRIVE!
Southern Lorain County
- Keystone Empowers You (KEY)
Keystone School District
- North Ridgeville Heart & Sole
North Ridgeville
- United We Sweat
Lorain County

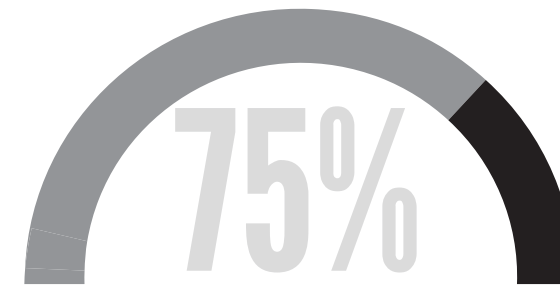


of adults in rural Lorain County are obese

TRANSPORTATION

Impact Initiative

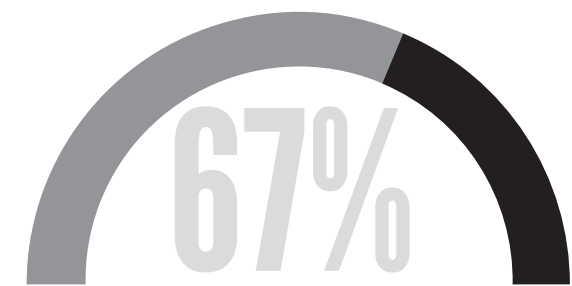
- Lorain County Mobility Management
Lorain County



of senior clients missed appointments due to lack of transportation (Transportation Forum at Kendal at Oberlin)

FINANCIAL STABILITY

- Community Collaboratives & Impact Initiatives
- United Community Assistance Network (UCAN)
Lorain County
 - Lorain County Free Tax Prep Coalition
Lorain County
 - Collect Sort Deliver
Lorain County



of 2-1-1 calls are related to emergency rent and assistance

OUR UNITED WAY

United Way of
Greater Lorain County



CONDENSED FINANCIAL STATEMENTS FOR YEAR ENDING JUNE 30, 2020

STATEMENT OF FINANCIAL POSITION

ASSETS

Cash and Investments	\$3,810,646
Pledges Receivable	744,620
Other Assets	153,273
Property and Equipment	558,915
Total Assets	\$5,267,454

LIABILITIES & NET ASSETS

LIABILITIES

Accounts Payable	\$56,450
Designations Payable	592,654
Grants Payable	603,502
Other Liabilities	289,695
Total Liabilities	\$1,542,301

NET ASSETS

Net Assets w/o Donor Restrictions	\$2,574,539
Net Assets w/ Donor Restriction	1,150,614
Total Net Assets	\$3,725,153
Total Liabilities and Net Assets	\$5,267,454

STATEMENT OF ACTIVITIES

PUBLIC SUPPORT

Pledges	\$2,165,803
Less Donor Designations	(247,758)
Less Provision for Uncollectible Pledges	(81,364)
Grant Income	524,389
Other Revenue	59,294
Investment Income	143,112
Total Public Support and Other Revenue	\$2,563,476

PROGRAM SERVICES

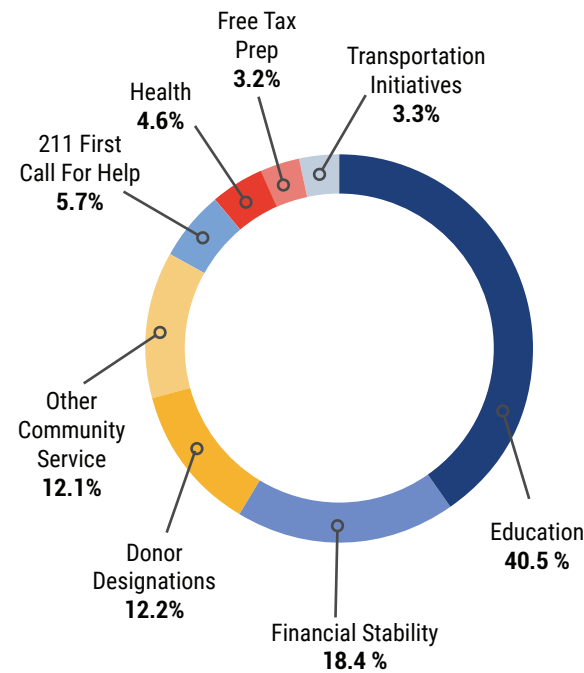
Collaboratives and Community Support	\$1,551,703
Information and Referral	115,915
Transportation Initiatives	68,142
Earned Income Tax Credit Coalition	66,958
Total Program and Support Services	\$1,802,718

SUPPORT SERVICES

Fundraising	\$290,119
Agency Administration	359,572
Total Program and Support Services	\$649,691

Change in Net Assets	111,067
Net Assets-Beginning of Year	3,614,086
Net Assets-End of Year	\$3,725,153

HOW WE INVEST IN OUR COMMUNITY



LETTER FROM OUR PRESIDENT & CEO

The work that we do at United Way of Greater Lorain County is not just a job for me. It is personal. I grew up in poverty right here in Lorain County. I lived with a single mom and rode the bus to LCCC while working multiple part-time jobs to help pay my way through school. My mom's health problems and lack of adequate health coverage created unexpected expenses and left her unable to keep our house, which she eventually lost to foreclosure.

When I thought I finally "made it" and landed my first director-level job as a 25 year old, I was quickly reminded that a crisis can arrive with no notice, and the organization I worked for was sold and folded, leaving me on unemployment and back in poverty.

Yet somehow I'm here as President & CEO of one of the most prominent agencies in our community. I am lucky. I know first-hand that there are people out there working hard to get out of a hole that they did not create. And I want to ensure they have an easier and more structured path to digging out than I did. I want to take luck out of the equation.

One of my favorite parts of doing this work is partnering with all of you. People from all different backgrounds and walks of life, with different opinions and perspectives, all coming together to Live United around one common goal.

Because of you, we're making real progress, and we're excited to share our results in the enclosed Annual Report.

We know the year ahead will be a great test as we navigate the aftermath of COVID-19. And we're prepared to take on that challenge, together with you, so hard-working people like my mom can have access to the resources they deserve. To ensure everyone in Greater Lorain County has an equal opportunity to thrive.

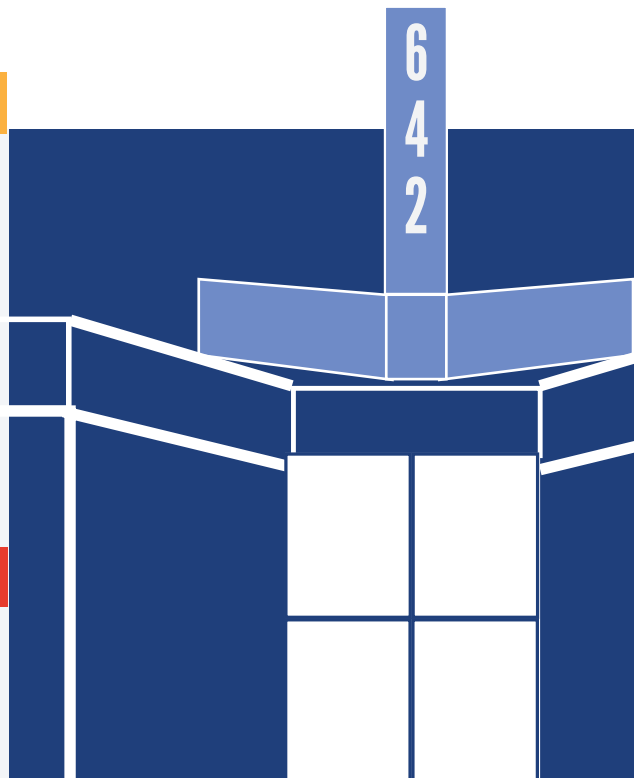
With Gratitude,

Ryan Aroney
President & CEO
United Way of Greater Lorain County

United Way of Greater Lorain County (UWGLC) is an independent organization governed by a board of directors comprised of community volunteers. An independent audit of UWGLC's financial records is conducted annually. Audited reports are available for public inspection at UWGLC or by visiting uwloraincounty.org. United Way of Greater Lorain County follows the American Institute of Certified Public Accountants' (AICPA) Audit and Accounting Guide for Not-For-Profit Organizations to ensure financial statements conform with Generally Accepted Accounting Practices (GAAP).

UNITED WAY OF GREATER LORAIN COUNTY 2019 - 20 BOARD OF DIRECTORS

Keith Brown: Chair Lorain County Community College	Brad Calabrese University Hospitals Avon Health Center	Stacy Kilgore Avient Corporation
Hallie Smith-Petee: Vice-Chair Nordson Corporation	Benjamin Colon Community-at-Large	Kathy Papp Retired-Capital University
Will Nordloh: Treasurer Avient Corporation	Garis Distelhorst Retired - LCCC Foundation	Elaine Seguin Levis Seguin CPA's
Lori Pronesti: Secretary North Ohio Heart Center	Franco Gallo Lorain County Educational Service Center	JR White Fauver Co.
Edward Baker Apex Wealth Management, LLC	Jose Gonzales, III HX5 Sierra, LLC	
Jade Blair Community-at-Large	Judy Hopkins Insurance Partners Agency, LLC	



UNITED WAY OF GREATER LORAIN COUNTY STAFF

Ryan Aroney President & CEO	Matt Brady Data & Impact Initiatives Manager	Norma Sánchez Volunteer Engagement Manager
Dianne Brehm Chief Financial Officer	Caitlin Cicero Finance & Database Specialist	Ariel Stadden Marketing & Design Specialist
Ashley Renée Hampson Marketing & Engagement Director	Robbi Goodwin Office Coordinator	
Christine Matusik-Plas Community Impact Director	Alex Moen Donor Engagement Specialist	

Follow Us @uwloraincounty

United Way of Greater Lorain County | 642 Broadway Ave, Lorain, OH 44052 | (440) 277-6530



ANNUAL REPORT 2019-20